

AVITAL LANGER

height 5'9.5 · bust 35" · cup B/C · waist 24" · hips 36.5" · dress 36-38 EU/6-8 US/8-10 UK
shoes size 38.5 EU/7.5 US/5.5 UK · hair dark brown · eyes blue



AVITAL LANGER

height 5'9.5 · bust 35" · cup B/C · waist 24" · hips 36.5" · dress 36-38 EU/6-8 US/8-10 UK
shoes size 38.5 EU/7.5 US/5.5 UK · hair dark brown · eyes blue



MGM
MODELS

MGM
MODELS

AVITAL LANGER

height 5'9.5 · bust 35" · cup B/C · waist 24" · hips 36.5" · dress 36-38 EU/6-8 US/8-10 UK
shoes size 38.5 EU/7.5 US/5.5 UK · hair dark brown · eyes blue



AVITAL LANGER

height 5'9.5 · bust 35" · cup B/C · waist 24" · hips 36.5" · dress 36-38 EU/6-8 US/8-10 UK
shoes size 38.5 EU/7.5 US/5.5 UK · hair dark brown · eyes blue

GLAMOUR®

3,50 € NOVIEMBRE ESPAÑA 2019

AMIGAS HERMANAS MUJERES

Celebramos un mes dedicado a la **SORORIDAD**
junto a **SOFIA MECHETNER, AVITAL LANGER y DORIT REVELIS**,
ejemplo de una juventud que reivindica el respeto y la solidaridad femenina.
Son las nuevas **FUERZAS DEL CAMBIO**

ESPECIAL BELLEZA
con **ANA RUJAS**
y **HUNTER SCHAFER**

Descubrimos a la **DISEÑADORA**
CECILIE BAHNSEN
y los mejores **ACCESORIOS**

00205
www.glamour.es

AVITAL LANGER

height 5'9.5 · bust 35" · cup B/C · waist 24" · hips 36.5" · dress 36-38 EU/6-8 US/8-10 UK
shoes size 38.5 EU/7.5 US/5.5 UK · hair dark brown · eyes blue



AVITAL LANGER

height 5'9.5 · bust 35" · cup B/C · waist 24" · hips 36.5" · dress 36-38 EU/6-8 US/8-10 UK
shoes size 38.5 EU/7.5 US/5.5 UK · hair dark brown · eyes blue

GLAMOUR Noviembre



- 18 STAFF**
- 20 BACKSTAGE**
- 22 EDITORIAL**
Por Alicia Parro
- 24 MAIL BOX**
Tus dudas, tus deseos...
- 27 HYPE**
Vuela alto
- 32 GLAMOUR ARMY**
Into The Mystic
- 34 Otoño XXL**
- 37 Viuda Negra**
- 38 Lluvia de estrellas**
- 39 GLAMOURAMA**
El poder del cuero;
Maude Apataw,
de hija de papá ¡nada!;
Un atentación clandestina;
El club de las 5;
Valentina y sus amigas
- TOP**
- 49 TENDENCIAS**
Notas de sensualidad
- 60 IN&OUT**
- 68 HOT TOPIC**
Gracias Gwyneth!

AVITAL LANGER

height 5'9.5 · bust 35" · cup B/C · waist 24" · hips 36.5" · dress 36-38 EU/6-8 US/8-10 UK
shoes size 38.5 EU/7.5 US/5.5 UK · hair dark brown · eyes blue



AVITAL LANGER

height 5'9.5 · bust 35" · cup B/C · waist 24" · hips 36.5" · dress 36-38 EU/6-8 US/8-10 UK
shoes size 38.5 EU/7.5 US/5.5 UK · hair dark brown · eyes blue



MGM
MODELS

MGM
MODELS

AVITAL LANGER

height 5'9.5 · bust 35" · cup B/C · waist 24" · hips 36.5" · dress 36-38 EU/6-8 US/8-10 UK
shoes size 38.5 EU/7.5 US/5.5 UK · hair dark brown · eyes blue



AVITAL LANGER

height 5'9.5 · bust 35" · cup B/C · waist 24" · hips 36.5" · dress 36-38 EU/6-8 US/8-10 UK
shoes size 38.5 EU/7.5 US/5.5 UK · hair dark brown · eyes blue

[PELO

El corte
que se lleva

Blunt bob

ENTRE LA MANDÍBULA
Y LOS HOMBROS, CON
PUNTAS DESFILADAS,
LA ÚLTIMA VERSIÓN
DEL ETERNO BOB VIENE
PISANDO FUERTE ESTA
TEMPORADA. FAVORECE
TANTO A PELO LISO
COMO RIZADO,
Y ES TAN VERSÁTIL
QUE LO QUERRÁS
LLEVAR SIEMPRE.

Escribe: CLARA SÁNCHEZ DE RON
Fotos: ANTONIO TERRÓN
Realiza: GABRIELLA NAEVE

84 TELVA

MGM
MODELS

AVITAL LANGER

height 5'9.5 · bust 35" · cup B/C · waist 24" · hips 36.5" · dress 36-38 EU/6-8 US/8-10 UK
shoes size 38.5 EU/7.5 US/5.5 UK · hair dark brown · eyes blue



MÁS CUERPO

La clave de este corte
es que aporta densidad
y movimiento a tu melena.

Cazadora
de piel, MAJE

TELVA 87

MGM
MODELS

AVITAL LANGER

height 5'9.5 · bust 35" · cup B/C · waist 24" · hips 36.5" · dress 36-38 EU/6-8 US/8-10 UK
shoes size 38.5 EU/7.5 US/5.5 UK · hair dark brown · eyes blue



AVITAL LANGER

height 5'9.5 · bust 35" · cup B/C · waist 24" · hips 36.5" · dress 36-38 EU/6-8 US/8-10 UK
shoes size 38.5 EU/7.5 US/5.5 UK · hair dark brown · eyes blue



AVITAL LANGER

height 5'9.5 · bust 35" · cup B/C · waist 24" · hips 36.5" · dress 36-38 EU/6-8 US/8-10 UK
shoes size 38.5 EU/7.5 US/5.5 UK · hair dark brown · eyes blue



AVITAL LANGER

height 5'9.5 · bust 35" · cup B/C · waist 24" · hips 36.5" · dress 36-38 EU/6-8 US/8-10 UK
shoes size 38.5 EU/7.5 US/5.5 UK · hair dark brown · eyes blue



AVITAL LANGER

height 5'9.5 · bust 35" · cup B/C · waist 24" · hips 36.5" · dress 36-38 EU/6-8 US/8-10 UK
shoes size 38.5 EU/7.5 US/5.5 UK · hair dark brown · eyes blue



MGM
MODELS

MGM
MODELS

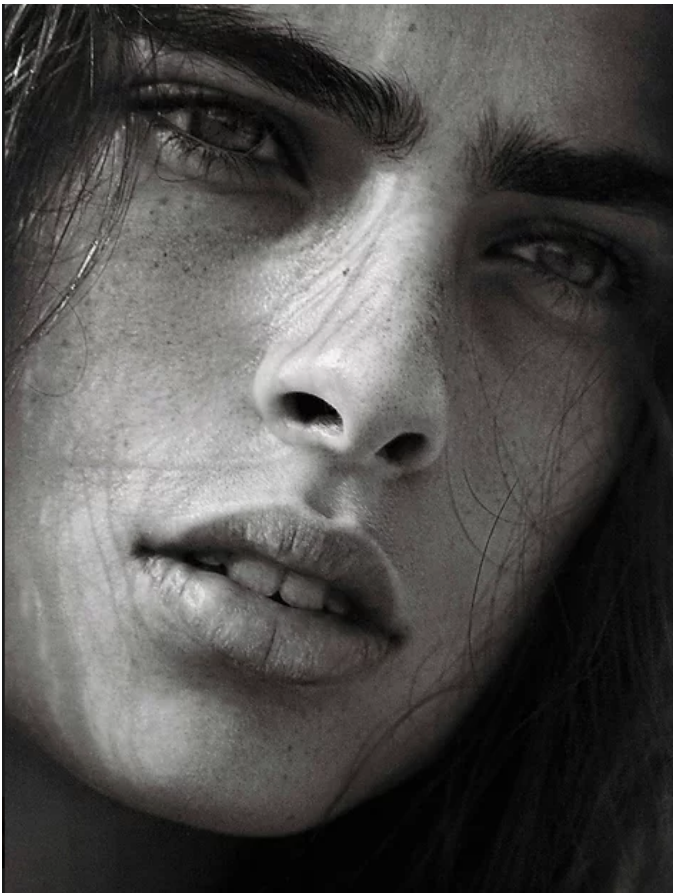
AVITAL LANGER

height 5'9.5 · bust 35" · cup B/C · waist 24" · hips 36.5" · dress 36-38 EU/6-8 US/8-10 UK
shoes size 38.5 EU/7.5 US/5.5 UK · hair dark brown · eyes blue



AVITAL LANGER

height 5'9.5 · bust 35" · cup B/C · waist 24" · hips 36.5" · dress 36-38 EU/6-8 US/8-10 UK
shoes size 38.5 EU/7.5 US/5.5 UK · hair dark brown · eyes blue



AVITAL LANGER

height 5'9.5 · bust 35" · cup B/C · waist 24" · hips 36.5" · dress 36-38 EU/6-8 US/8-10 UK
shoes size 38.5 EU/7.5 US/5.5 UK · hair dark brown · eyes blue



AVITAL LANGER

height 5'9.5 · bust 35" · cup B/C · waist 24" · hips 36.5" · dress 36-38 EU/6-8 US/8-10 UK
shoes size 38.5 EU/7.5 US/5.5 UK · hair dark brown · eyes blue



Chaqueta, de Claudie Pierlot (345 €); falda plisada, de Maje (225 €); zapatos, de Gucci (c.p.v.); bolso, de Saint Laurent Paris (995 €); cinturón, de Salvatore Ferragamo (c.p.v.); y pendientes, de Balenciaga (252 €).

En la otra página, camisa con lazo (950 €), falda (1.950 €), cinturón (800 €) y botas (1.690 €), todo de Céline; bolso, de Gucci (2.500 €); y pendientes, de Balenciaga (252 €).

AVITAL LANGER

height 5'9.5 · bust 35" · cup B/C · waist 24" · hips 36.5" · dress 36-38 EU/6-8 US/8-10 UK
shoes size 38.5 EU/7.5 US/5.5 UK · hair dark brown · eyes blue



AVITAL LANGER

height 5'9.5 · bust 35" · cup B/C · waist 24" · hips 36.5" · dress 36-38 EU/6-8 US/8-10 UK
shoes size 38.5 EU/7.5 US/5.5 UK · hair dark brown · eyes blue



AVITAL LANGER

height 5'9.5 · bust 35" · cup B/C · waist 24" · hips 36.5" · dress 36-38 EU/6-8 US/8-10 UK
shoes size 38.5 EU/7.5 US/5.5 UK · hair dark brown · eyes blue



MGM
MODELS

MGM
MODELS

AVITAL LANGER

height 5'9.5 · bust 35" · cup B/C · waist 24" · hips 36.5" · dress 36-38 EU/6-8 US/8-10 UK
shoes size 38.5 EU/7.5 US/5.5 UK · hair dark brown · eyes blue



AVITAL LANGER

height 5'9.5 · bust 35" · cup B/C · waist 24" · hips 36.5" · dress 36-38 EU/6-8 US/8-10 UK
shoes size 38.5 EU/7.5 US/5.5 UK · hair dark brown · eyes blue



AVITAL LANGER

height 5'9.5 · bust 35" · cup B/C · waist 24" · hips 36.5" · dress 36-38 EU/6-8 US/8-10 UK
shoes size 38.5 EU/7.5 US/5.5 UK · hair dark brown · eyes blue



AVITAL LANGER

height 5'9.5 · bust 35" · cup B/C · waist 24" · hips 36.5" · dress 36-38 EU/6-8 US/8-10 UK
shoes size 38.5 EU/7.5 US/5.5 UK · hair dark brown · eyes blue



AVITAL LANGER

height 5'9.5 · bust 35" · cup B/C · waist 24" · hips 36.5" · dress 36-38 EU/6-8 US/8-10 UK
shoes size 38.5 EU/7.5 US/5.5 UK · hair dark brown · eyes blue



MGM
MODELS

MGM
MODELS

AVITAL LANGER

height 5'9.5 · bust 35" · cup B/C · waist 24" · hips 36.5" · dress 36-38 EU/6-8 US/8-10 UK
shoes size 38.5 EU/7.5 US/5.5 UK · hair dark brown · eyes blue

